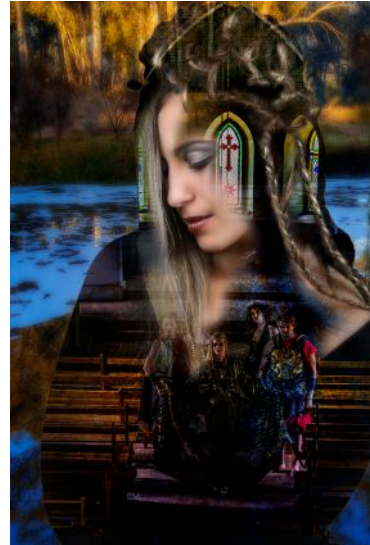


This tutorial should teach you multiple Photoshop skills

- save and load selections
- selection options
- refine selections
- multiple layers
- layer masks
- brushes
- and imagination



Once you understand, manipulate and motivate steps in this tutorial you will have a sound knowledge of the general workings of Photoshop.

Images for this tutorial can be downloaded at heinwaschefort.com

step 1

Prepare 3 images for this tutorial, I encourage students to use;

- a portrait with neutral background (human element)
- a nature photo
- a structure / architecture photo

If the aim is to **print** final result images should be around 40megs.



Photo of Casey Newart.
portrait

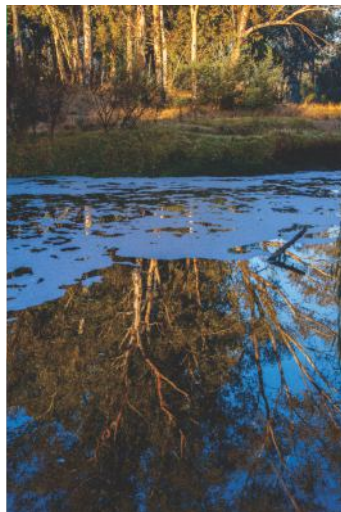


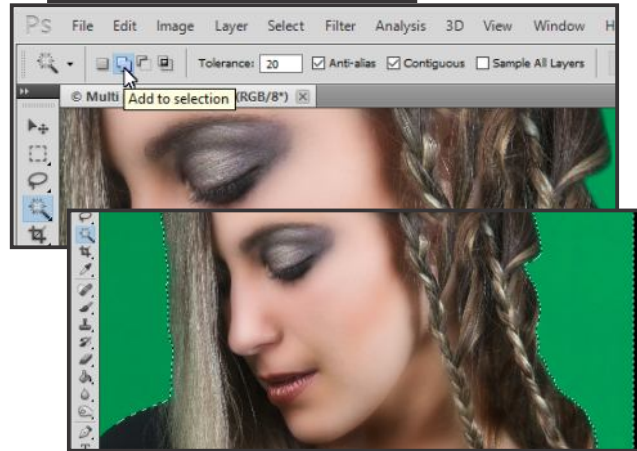
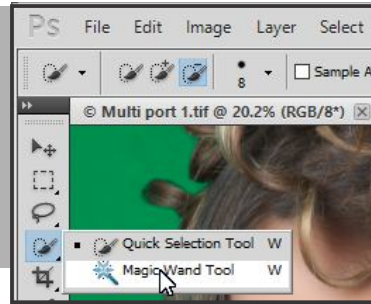
Photo of river and trees.
Nature



Photo inside church.
Structure

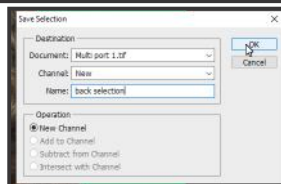
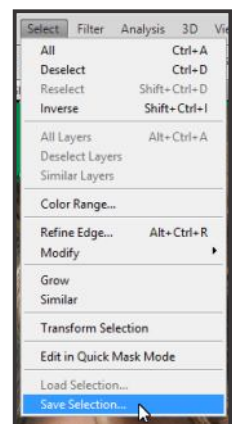
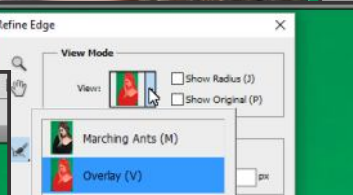
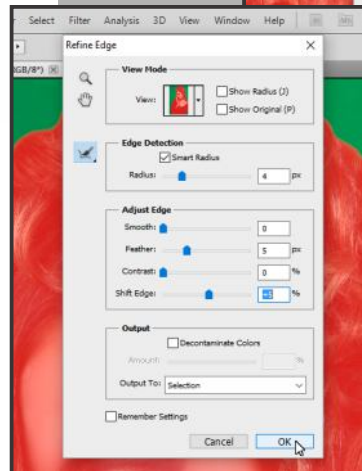
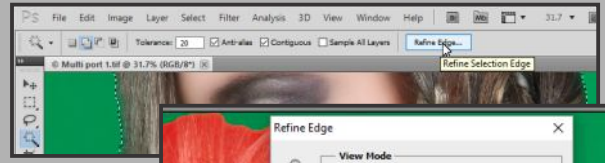
step ②

- Open prepared portrait with neutral backdrop, I prefer a green screen backdrop since it is easy to select but any flat colour will work. **Choose Magic Wand Tool.**
- Set **Tolerance** to **20** or your choice depending on background hues (the closer the background hues are to the subject hues the less the **Tolerance**), click the **Anti-alias** and **Contiguous** boxes and choose **Add to selection**.
- Click on background near edge of subject, continue clicking on background until you have running lines surrounding your subject and outside frame. If you struggle, raise or lower the **Tolerance** while working the background.



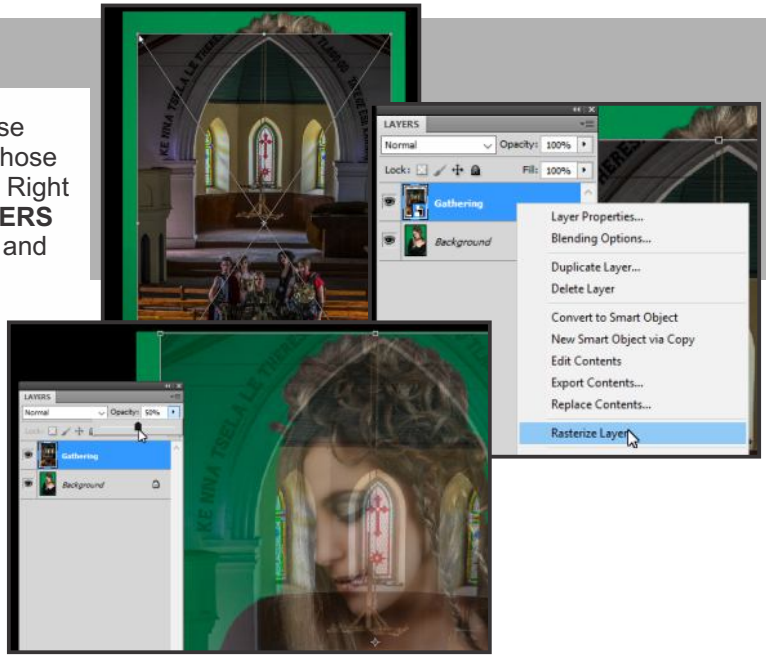
step ③

- Click Refine Edge... (in latest versions go to **Select > Mask in Options bar**)
- In fly out menu I like to select **Overlay** in drop down menu in **View:** block.
- In fly out menu- under **Edge detection** select; **Smart Radius**, I chose **4** pixels. In fly out menu- under **Adjust Edge** I chose **Feather: 5**, **Shift Edge: +5** (this cuts into the subject slightly). Click **OK**.
- Go to **Select > Save Selection...** and save as **back selection**. Click **OK**



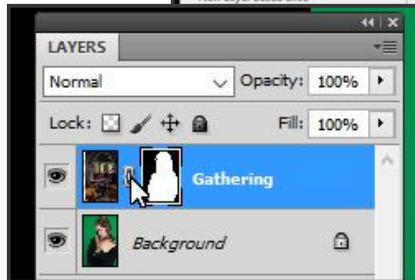
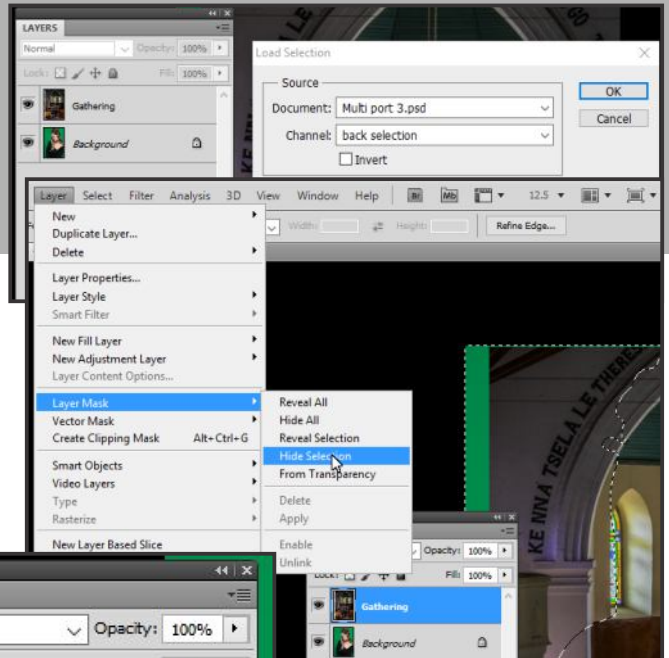
step 4

- Select **File > Place** choose photo from saved files (I chose 'gathering'). Press **enter**. Right click on **gathering** in **LAYERS** box (**Windows > Layers**) and choose **Rasterize Layer**.
- Still in **LAYERS** box click on **Opacity:** (top right) and move slider with mouse to around **50%**. Now resize and move **gathering** or your image to your desire. Go to **Opacity:** again and move it back to **100%**.



step 5

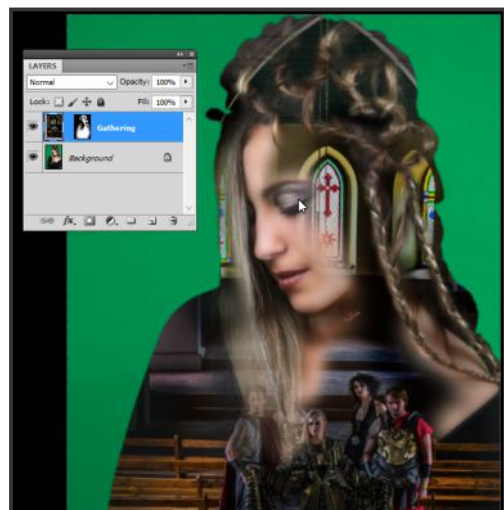
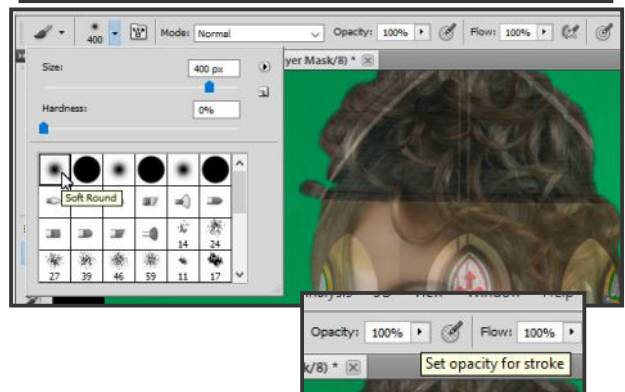
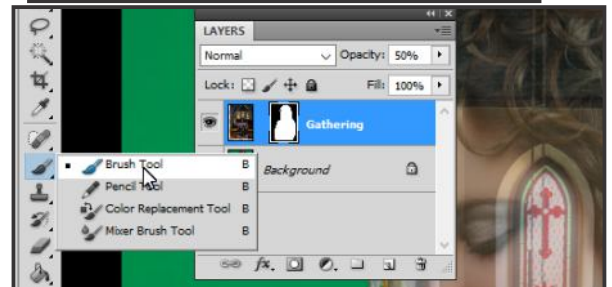
- Make sure no layers are selected by clicking outside layers in **LAYERS** box. Go to **Select > Load Selection** click **OK** you should see running ants of object.
- With **gathering** selected go to **Layers > Layer Mask** click **Hide Selection**.
- Between **gathering** thumb nail and mask click on lock to unlock, the lock will disappear. By clicking on **gathering** (corners will appear on thumb nail indicating that it is active) you can now re-adjust the image inside the object.



step 6

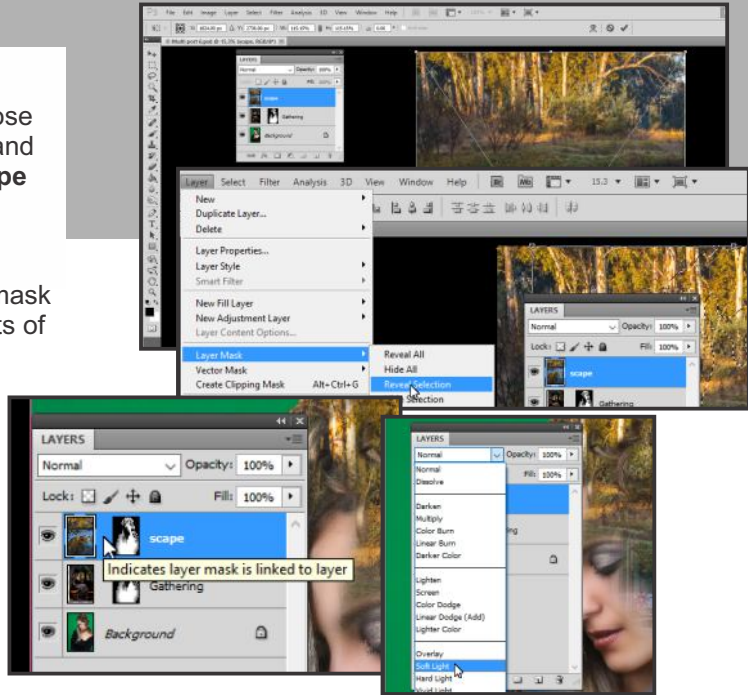
- Still in **LAYERS** box select **gathering** mask thumb nail (corners will appear) to make it active, click on **Opacity:** (top right) and move slider with mouse to around **50%**.
- If **Foreground colour** is not black, click on **Set foreground color** and move picker in colour box to bottom right corner (black) > **OK**. If **Background color** is not white click on **Set background color** and move picker to top left (white) > **OK**. In future when you want to change front colour to back colour click **Switch Foreground and Background Colours** (toggle) on toolbox above **Foreground** and **Background** colour selection.
- Click on the mask to make it active. and choose **Brush Tool** from toolbox.
- Choose **Soft Round** nib, **Opacity:** and **Flow:** will be **100%**. To change nib size use square brackets, [], on keyboard (make sure caps lock is not turned on or icon/circle will not display).
- With mask selected start painting with black on image to lift background, should you wish to take background back again repaint with white by toggling as described in **step 6b**. Change opacity of layer back to 100% (in **LAYERS** box) regularly to view progress, for final finishing keep **LAYERS > Opacity:** at **100%**. You can also partially lift background by changing opacity, **Set opacity for stroke**, of brush at top.

TIP: When you enlarge an area and want to go back to full view, double click on hand in toolbox.



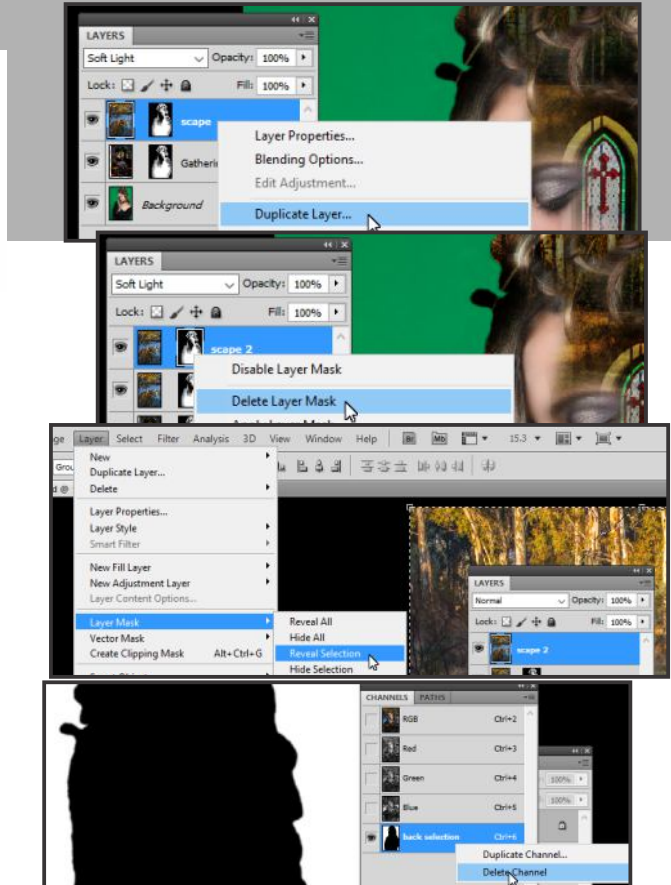
step 7

- Select **File > Place** choose photo from saved files (I chose 'scape') resize to fill frame and hit **enter**. Right click on **scape** in **LAYERS** box and choose **Rasterise Layer** (similar to Step 4a).
- Hold **ctrl** key and click on mask in **LAYERS** box, running ants of layer will appear.
- Go to **Layers > Layer Mask > Reveal Selection** (with scapes selected in **LAYERS** box). Separate layer and mask as in as in **step 5c**.
- In **LAYERS** box in drop down menu (next to normal at top) choose **Soft Light**



step 8

- Right click on **scape** layer in **LAYERS** box and choose **Duplicate Layer...** name this layer **scape 2** in pop up menu hit **OK**.
- Right click on **scape 2** mask and choose **Delete Layer Mask**, change **Soft Light** at top back to **Normal**. (an option is to soft focus this scape, tutorial at heinwaschefort.com).
- Make sure no layers are selected by clicking outside layers in **LAYERS** box. Go to **Select > Load Selection** click **OK** you should see running ants of object (**step 5a**).
- Select **scape 2** layer and click **Layer > Layer Mask > Reveal Selection**.
- Final step (very important) after layers are flattened, click **Windows > CHANNELS** right click **back selection** click **Delete Channel**.



step 9

- a. First save this tutorial as psd file to keep layers for later reference. Now the fun starts, I copied the original layers without masks (**step 8 a&b**) and took them to the top in LAYERS box.
- b. I then selected all layers worked on and combined them with background and then created a new layer from background.
- c. With stacking layers and using eraser tool (remember using the eraser is destructive unlike working with layers). Save as new file. **AND PRINT!**



"Byzantine" Hein Waschefort